

Get to Know Us!

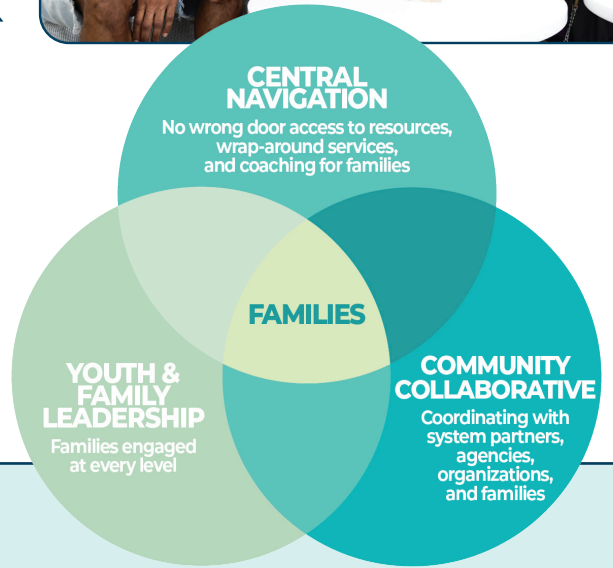


Family Resource Connector Network



What does The Bridge do for families in Omaha?

The Bridge Family Resource Connector Network is committed to reducing the number of children and families who enter the child-welfare and juvenile justice systems.



We use 3 research-based strategies:

ONE

No wrong door access to community resources. We call this **Central Navigation**. Using a client-led framework, Bridge navigators build relationships, utilize warm hand-offs, and remain available for as long as necessary.

TWO

Empowering and listening to the voices of those most impacted. We call this **Youth and Family Leadership**. From our board of directors to monthly advisories, The Bridge is lifting up family voice and choice.

THREE

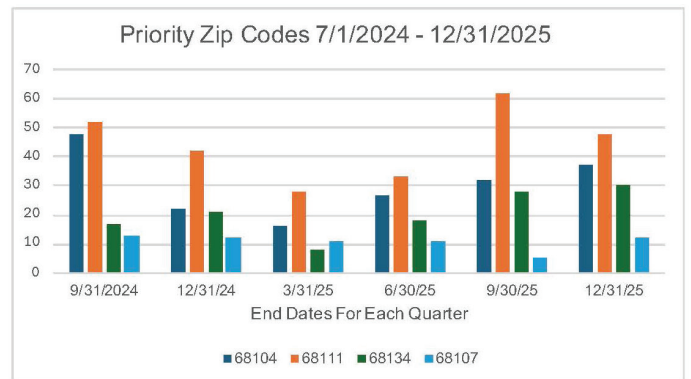
Working in partnership with all stakeholders to do together what a single agency or organization cannot do alone. We call this **Community Collaboration**.

Who does The Bridge Serve?

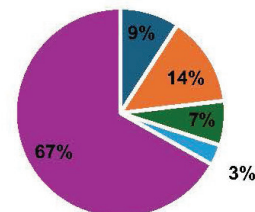
Anyone with a minor child in the home and youth/young adults up to the age of 26 are eligible to receive services.

Bridge families come from every area in the Omaha Metro.

Zip codes with the highest referral rates are 68104, 68111, and 68134. These correspond with the areas of greatest need based on data from DHHS and Douglas County. The Bridge continues to build relationships in South Omaha. Referral rates in the 68107 zip code have risen after dropping in the first half of 2025.



Priority Zip Codes As A Percentage of all 2025 Referrals



Visit our website or scan the QR code to learn more about our organization!

BridgeFamilyNetwork.org



• 68104 • 68111 • 68134 • 68107 • all other zip codes

What do Bridge families need?

Most families seek us out when they are in a financial crisis.

- Nearly half of all clients request assistance with utilities.
- More than 30% need help with housing or transportation.

Once a crisis is stabilized, our navigators can work with families to create a sustainability plan and set goals. Some families may be interested in more intensive case management through our coaching partners.

How do families find The Bridge?

The Bridge practices a “no wrong door” approach to access

- 20% through a non-profit partner or a church
- 18% through an internet search
- 10% through their school.

Referrals from law-enforcement are increasing and average more than one each month.

Other referral sources include DHHS, friends and family, and medical professionals.

A Network of Support

Quarterly Collaborative

72 Stakeholder groups
Average attendance of 48 organizational leaders

- DHHS
- School Districts
- Douglas Co.
- Health Care
- Non-profits

Monthly Resource Group

92 Stakeholder groups
Average attendance of 81 direct-service staff

Community Wide Training

70 professional participants in 2025
Navigation best practice through Youth & Families Thrive
Motivational Interviewing Workshops
Findhelp database training and technical assistance

Leadership Opportunities

Community Cafes
Parent Leadership Advisory
Youth Leadership Advisory
454 youth, young adults, and parents participated in leadership activities in 2025

How Can You Help?

- Share referral information
- Attend an event
- Follow us on Facebook and LinkedIn
- Support The Bridge with a gift through our website
- Stop by our Family Resource Center at 314 S. 26th St.



Scan Me!



Family Resource
Connector Network

BridgeFamilyNetwork.org